

54/37

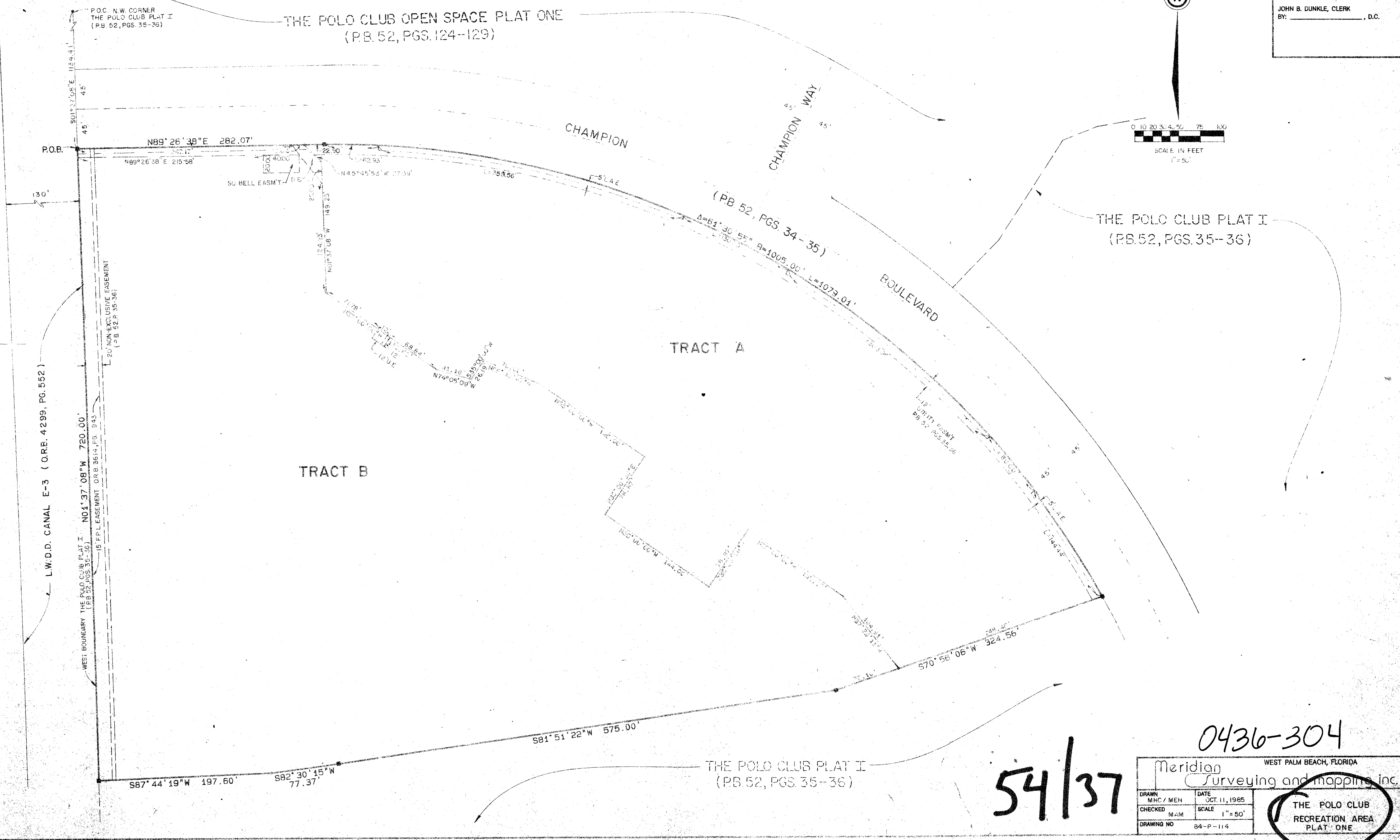
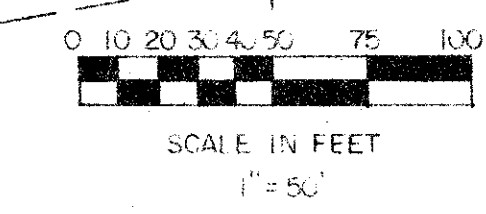
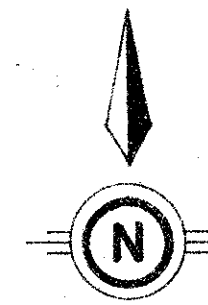
37

THE POLO CLUB RECREATION AREA PLAT ONE
 BEING A REPLAT OF A PORTION OF TRACT III, "THE POLO CLUB PLAT I"
 SITUATE IN SECTION 35, TOWNSHIP 46 SOUTH, RANGE 42 EAST
 PALM BEACH COUNTY, FLORIDA

MARCH, 1986

SHEET 2 OF 2

STATE OF FLORIDA
 COUNTY OF PALM BEACH
 THIS PLAT WAS FILED FOR
 RECORD AT _____
 THIS _____ DAY OF _____
 AD, 1985 AND DULY RECORDED
 IN PLAT BOOK _____ ON PAGES
 _____ AND _____
 JOHN B. DUNKLE, CLERK
 BY: _____, D.C.



DRAWING NUMBER

DRAWING NUMBER

DRAWING NUMBER

54/37

0436-304

Meridian Surveying and Mapping, Inc.		WEST PALM BEACH, FLORIDA	
DRAWN MHC / MEH	DATE OCT. 11, 1985	CHECKED M.A.M.	SCALE 1" = 50'
DRAWING NO 84-P-114		THE POLO CLUB RECREATION AREA PLAT ONE	